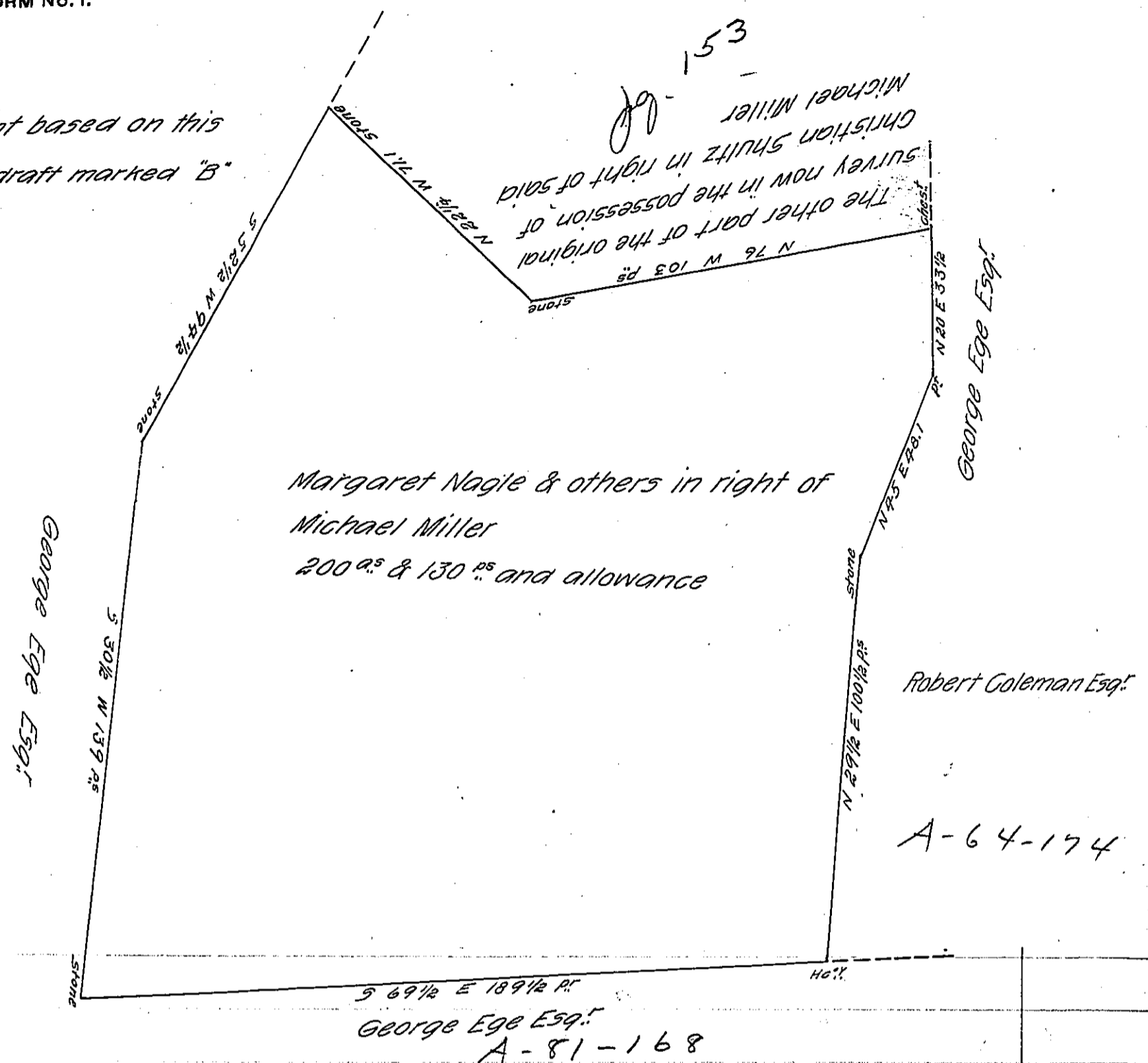


FORM NO. 1.

"A"  
Patent based on this  
and draft marked "B"



A draught of a piece or tract of land situate in Heidleberg township part in Lancaster County and part in Dauphin County containing 200<sup>a.</sup> & 130<sup>p.</sup> and the usual allowance of six p. cent for roads &c surveyed (agreeable to the old lines and corners) the 22<sup>d</sup> day of November A.D. 1803 for Margaret Nagle and others in right of Michael Miller &c. (it being part of a larger tract of 334<sup>a.</sup> and allowance formerly surveyed unto the said Michael Miller by virtue of a warrant dated the 21<sup>st</sup> day of September <sup>1748</sup>/<sub>1749</sub> &c

To Samuel Cochran Esq.  
Surveyor General  
X say 27<sup>th</sup>

P<sup>r</sup>. H Ream D<sup>s</sup>.  
& S Ensminger D<sup>s</sup>.

IN TESTIMONY that the above is a copy of the original remaining on file in the Department of Internal Affairs of Pennsylvania, made conformably to an Act of Assembly approved the 16th day of February, 1833, I have hereunto set my Hand and caused the Seal of said Department to be affixed at Harrisburg, this first day of May 1906

*Asaac B. Brown*  
Secretary of Internal Affairs.